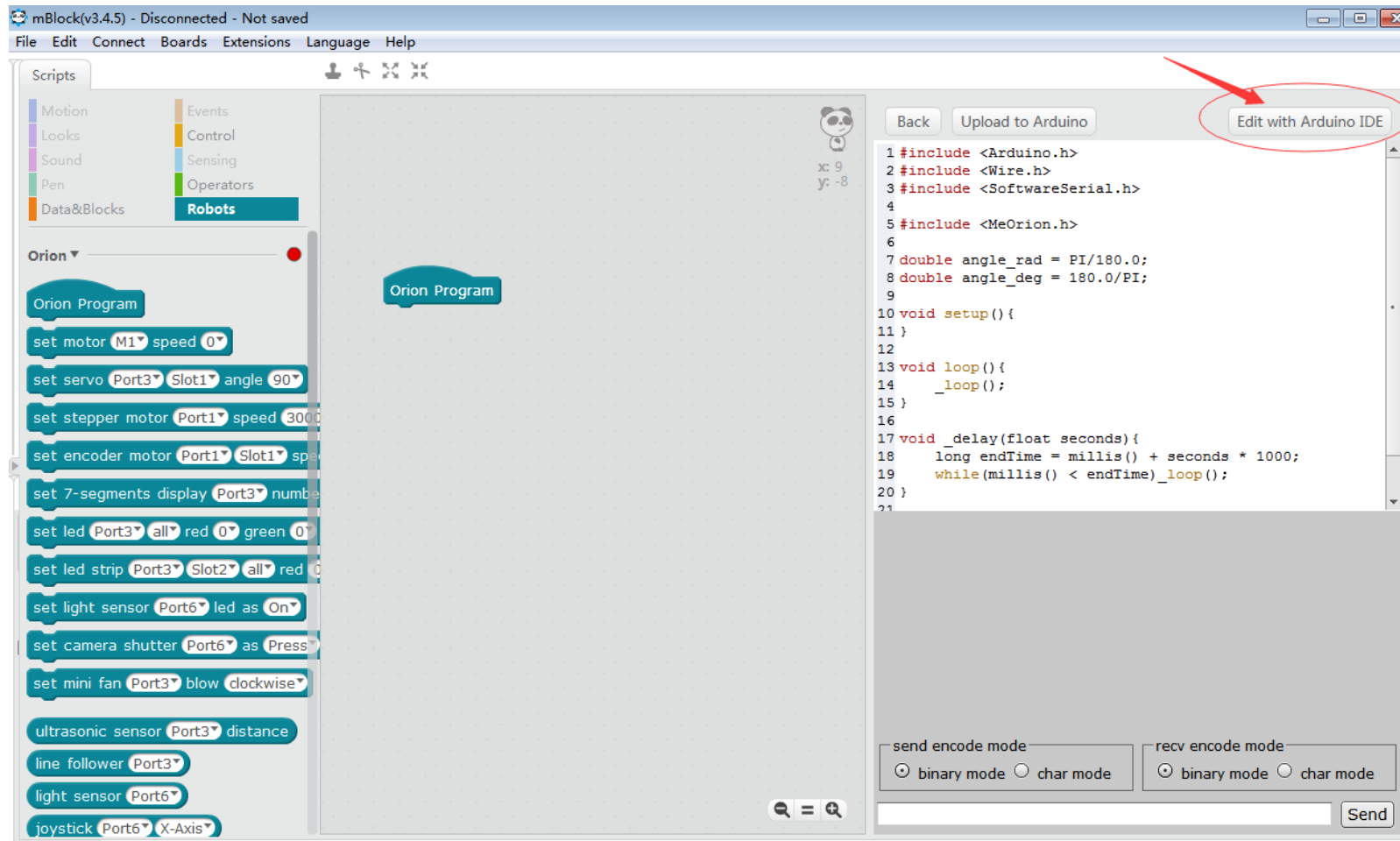
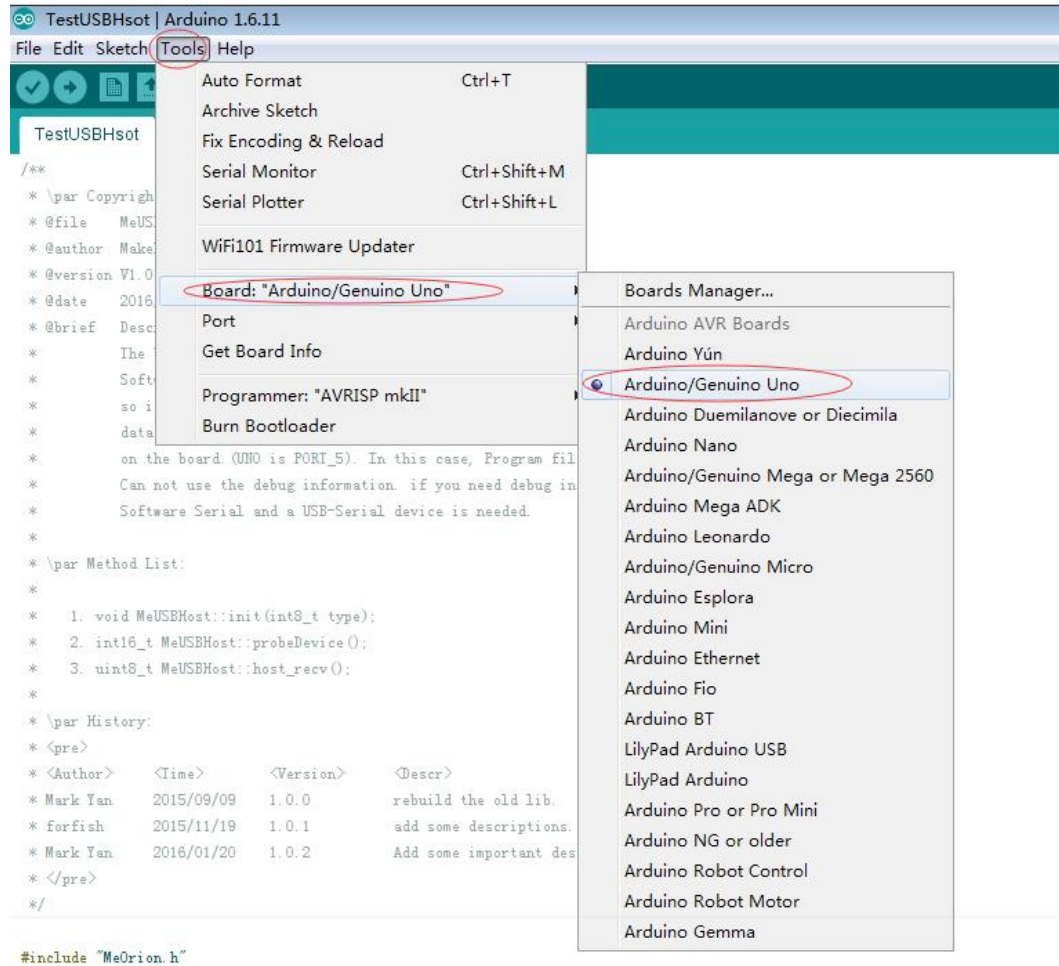


1. Please open the Arduino software through the mBlock software:



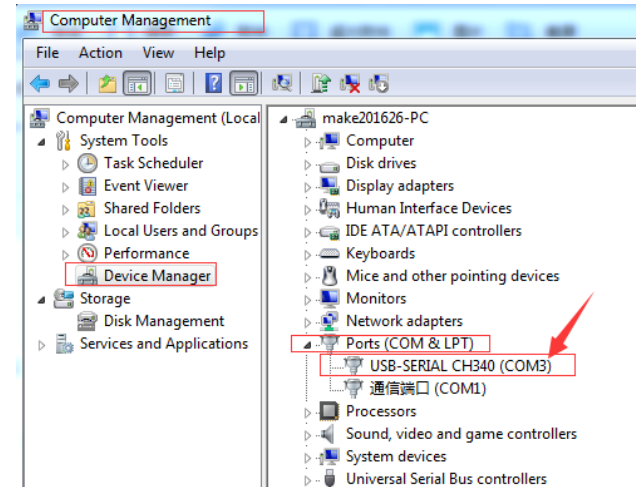
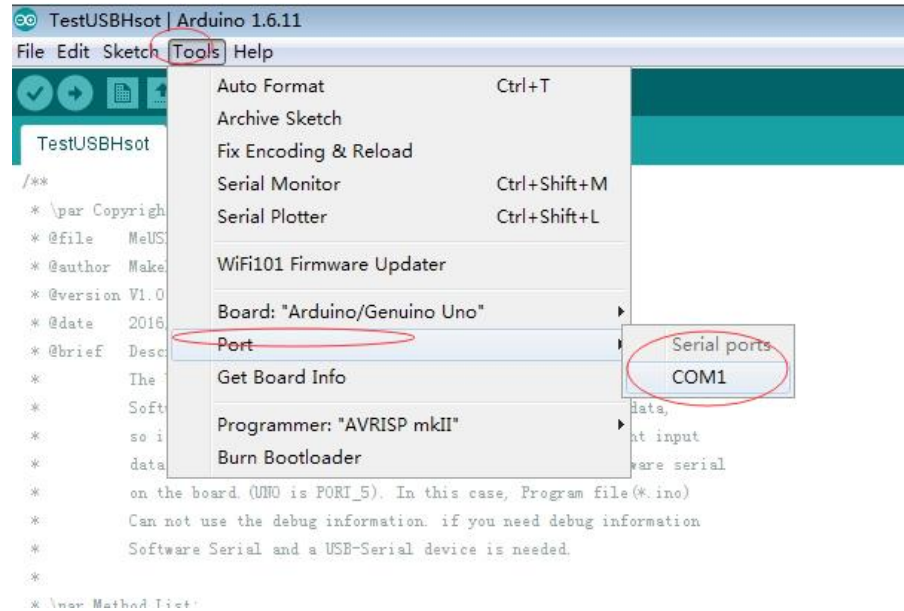
2. On Arduino software, go to **Tools->Board** and choose the correct Board type for your robot.

If it is mBot, Starter, Ultimate Blue, here you can choose the **Arduino/Geuino Uno**.

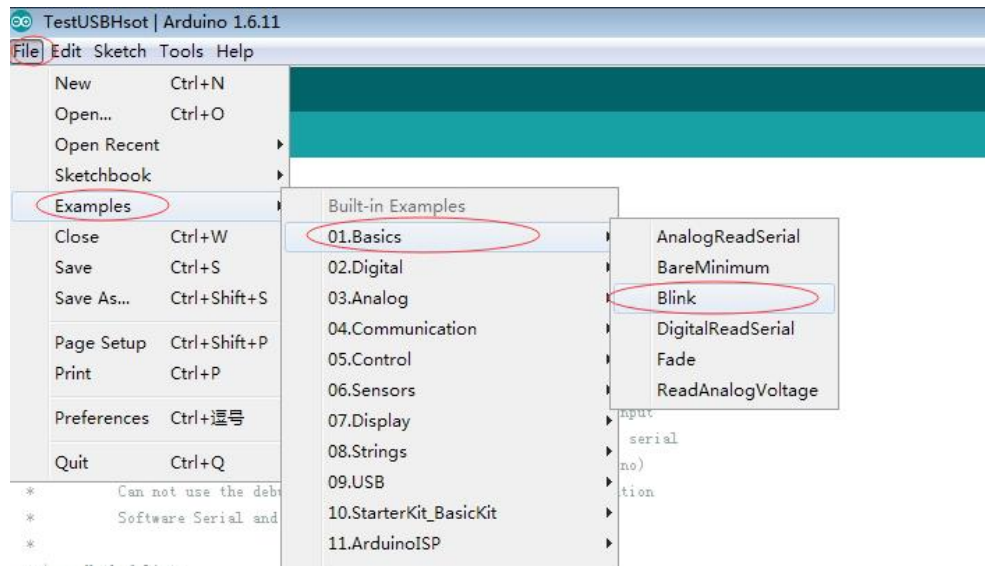


3. Go to **Tools->Port**, then choose the correct serial port for your robot. You can check your robot/main board serial port under your computer's **Device**

Manager->Ports (COM&LPT)



4. Go to **File->Examples**, find and open the example program file "Blink".



5. Upload the program to the Robot and see if it can be upload successfully.



Result:

1. If the program upload successfully. Please check if there is a LED keep blinking on the Main board. If there is a led blinking, it means the main board is working ok.
2. If there is an error like below, it means the board has lost its bootloader. Normally you need a new board in this case.

```
avrdude: verification error; content mismatch
```

```
avrdude: verification error, first mismatch at byte 0x0000
```

```
0x62 != 0x0c
```

```
avrdude: verification error; content mismatch
```

```
avrdude: verification error; content mismatch
```